



DOE VICEROY and VISCOUNT have been our best selling tennis surfaces throughout the UK since the early 80s.

They are the foundation of all the previous tennis surfaces in the Doe range. Provided they are properly maintained, it is easy to overlay them in later years with one of our “grass” tennis carpets – DOE OLYMPUS, TROJAN or CASOLON.



## PERFORMANCE

**DOE VICEROY** is an attractive, naturally black surface constructed using pervious asphalt (macadam) specifically designed for tennis courts. The surface is laid using steel screed bars to ensure the correct tolerance. Our Foremen's expertise and experience in the correct rolling and compaction of the surface during construction are vital elements in the finished quality of the court.

**DOE VICEROY** can be laid either as a "single layer" surface – **VICEROY 32** or, with a base course beneath the playing surface to give a "double layer" court – **VICEROY 65**.

Club, School and all intensively used courts should be constructed using the "double layer" 65mm depth system for their new court installations.

**DOE VISCOUNT** is the black **VICEROY** court – either the 32 or the 65 – enhanced by an additional layer – an application of Doe's acrylic tennis court coating in single or dual colours of your choice.

Players will notice that the ball "comes through better" on the colour coated **VISCOUNT** surface. It offers a lower ball bounce and faster surface pace than the black **VICEROY** surface.

The colour coating on **VISCOUNT** also helps to deflect the sun's heat, making the surface less susceptible to softening in summer temperatures. The **VISCOUNT** colours are very attractive and greatly enhance the aesthetic quality of the court.

The acrylic coating used by **DOE** has been tested to meet and exceed recognised standards in sports surface coating technology. It is applied in a fine mist spray and does not impair the natural porosity of the playing surface.

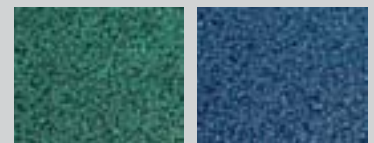
In common with all types of tennis surface, **VICEROY** and **VISCOUNT** benefit from routine maintenance. This is not onerous provided it is carried out regularly from the start and it will safeguard your investment.

### VICEROY Surface



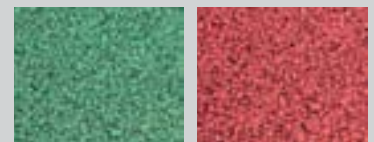
*Black*

### VISCOUNT Standard Colours



*Dark Green*

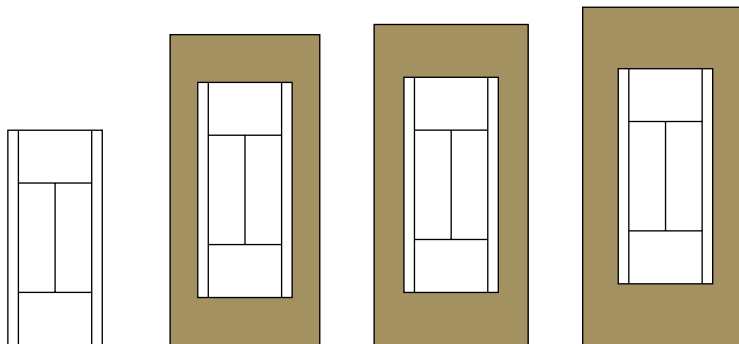
*Blue*



*Light Green*

*Red*

## COURT SIZES



### Playing Area

23.77m x 10.97m  
(78' x 36')

### Residential Courts Normal Minimum

33.53m x 16.46m  
(110' x 54')

### LTA Recommended Minimum Size

34.75m x 17.07m  
(114' x 56')

### LTA Recommended Full Size

36.58m x 18.29m  
(120' x 60')

Overall enclosure  
for one court:

The information contained in this leaflet may be subject to alteration without notice.

Feering, Essex

T 01376 572555

F 01376 572666

E doe@doesport.co.uk

Skelmersdale, Lancashire

T 01695 559400

F 01333 424340

E doe@doenorth.co.uk

Methil, Fife

T 01333 422205

F 01333 424340

E doe@doenorth.co.uk

